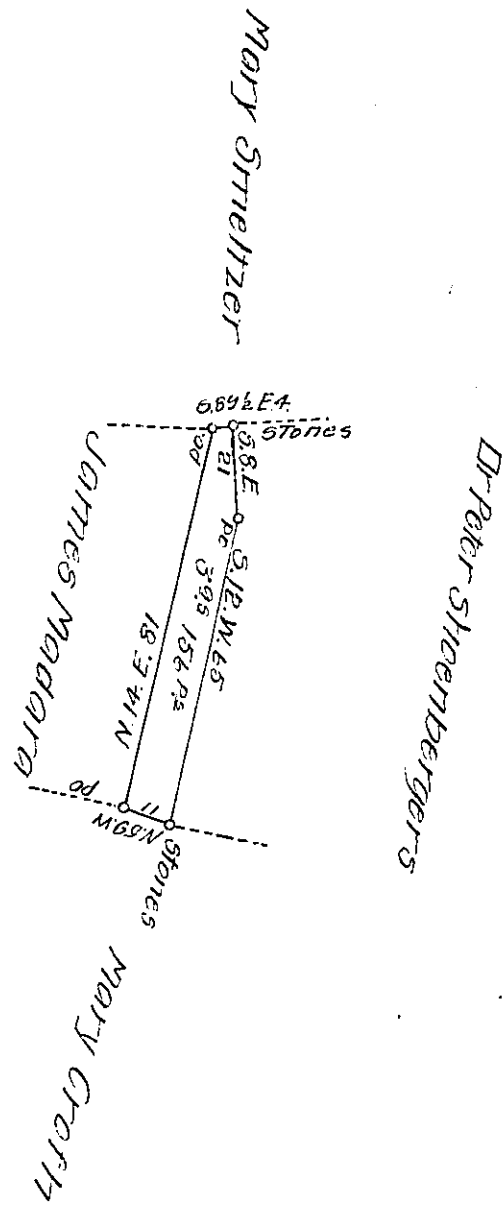


FORM No. 1.



Situate in Middle Woodberry Township Bedford County  
 Containing 3<sup>00</sup> 156 perches, And the usual allowance of  
 Six per Cent for Roads. Surveyed 15<sup>th</sup> day of August A.D.  
 1868. In pursuance of a Warrant granted to James  
 Madara dated 5<sup>th</sup> day of August A.D. 1869. for 4<sup>00</sup> 50<sup>00</sup>

Saml<sup>r</sup> Ketterman

D.S.

To J.M. Cartipbell Esqr

S. G.

Approved of the 12<sup>th</sup> day August A.D. 1868.

P. Jonathan C.S.

IN TESTIMONY that the above is a copy of the original remaining on file in  
 the Department of Internal Affairs of Pennsylvania, made  
 conformably to an Act of Assembly approved the 16th day of  
 February 1833, I have hereunto set my hand and caused  
 the Seal of said Department to be affixed at Harrisburg,  
 this twenty-second day of August 1907

*Henry Howard*

Secretary of Internal Affairs.